

Resources & Business  
Transformation

Head of Legal & Democratic Services  
Anne Davies

Buckinghamshire Historic Environment  
Forum Distribution List

**Buckinghamshire County Council**

**Legal & Democratic Services**

County Hall, Walton Street  
Aylesbury, Buckinghamshire HP20 1UA

DX 97401 Aylesbury 2  
www.buckscc.gov.uk

**Contact:** Katy MacDonald  
**Direct Line:** 01296 383604  
**Fax:** 01296 382538  
**Email:** kmacdonald@buckscc.gov.uk

**Date:** 03 November 2011

Dear Member

**Buckinghamshire Historic Environment Forum Meeting 08 November 2011**

To Follow Documents:-

<b>Agenda Item</b>	<b>Page No</b>
<b>6 HERITAGE AT RISK</b> Report of the County Archaeologist	<b>1 - 4</b>
<b>7 LOCAL GOVERNMENT HISTORIC ENVIRONMENT SERVICES</b> Report of the County Archaeologist	<b>5 - 16</b>
<b>9 BUCKINGHAMSHIRE COUNTY ARCHAEOLOGIST'S REPORT</b> Report of the Historic Environment Record Officer	<b>17 - 32</b>
<b>10 BUCKINGHAMSHIRE HISTORIC ENVIRONMENT RECORD REPORT</b> Report of the Historic Environment Record Officer	<b>33 - 34</b>
<b>15 EMERGENCY RECORDING FUND</b> Report of the Treasurer	<b>35 - 36</b>

Yours sincerely

**Katy MacDonald**  
**Democratic Services Officer**





## HERITAGE AT RISK

To: Buckinghamshire Historic Environment Forum

Date: 8<sup>th</sup> November 2011

Authors: Report of the County Archaeologist

### A. PURPOSE OF THE REPORT

1 To inform the Forum of English Heritage's Heritage at Risk survey of 2011.

### B. PROPOSED ACTION

2 The Forum is invited to:

#### **NOTE the conclusions of the survey**

**AGREE that should HS2 be given the go-ahead then the Forum will ask English Heritage to add threatened designated heritage assets along its route through Buckinghamshire to the at risk register in 2012**

### C. RESOURCE IMPLICATIONS

3 None directly from reporting but potentially major where repairs or mitigation required to buildings, landscapes or ancient monuments.

### D. SUPPORTING INFORMATION

4 The table appended to this report summarises the current situation in Buckinghamshire compared to the averages for the South East and England. By this measure a lower proportion of heritage assets are at risk in Buckinghamshire than across England as a whole, although the levels of risk are broadly similar to the South East.

5 There have been a few changes since the register was first reported to HEF in 2009. In Aylesbury Vale, Ashfold School (Dinton) and Dinton Castle have been removed from the list but the Church of St.Mary at Ludgershall has been added as have two churches in Wycombe District and a house in Olney (MK). There is no change to registered parks at risk. Chesham Old Town conservation area has been removed from the list. Two scheduled monuments have been removed from the list but the motte and bailey castle, moated site and Roman villa at Little Kimble has been added. Overall the impression is that the risk to designated heritage assets has remained fairly stable.

6 However, if HS2 is given the go-ahead in December then one scheduled monument (part of Grim's Ditch), two registered parks (Hartwell and Shardloes) and a conservation area (Hartwell) would be put directly at risk. In addition the effect on the settings of several grade I and II\* listed buildings may be sufficiently serious to place them at risk.

E. BACKGROUND PAPERS

Heritage at Risk Register 2011, English Heritage

**CONTACT OFFICER: ALEXANDER (SANDY) KIDD 01296-382927**

## Heritage at Risk 2011

	Listed Buildings (grade I and II*)	Registered Parks & Gardens	Scheduled Ancient Monuments	Conservation Areas
<b>Aylesbury Vale</b>	<ul style="list-style-type: none"> <li>Barn at New Manor Farm, Broughton Lane, Bierton</li> <li>Church of St.Mary, Ludgershall</li> <li>Mentmore Towers</li> <li>New Inn Farmhouse, Stowe</li> <li>Temple of Friendship, Stowe</li> <li>Palladian Bridge, Stowe</li> <li>Queen's Temple, Stowe</li> <li>East Boycott Pavilion, Stowe</li> </ul>	<ul style="list-style-type: none"> <li>Halton</li> <li>Mentmore Towers</li> </ul>	<ul style="list-style-type: none"> <li>Small multivallate hillfort on Southend Hill, Cheddington</li> <li>A slight univallate hillfort 600m south east of Home Farm, Maids Moreton</li> </ul>	none
<b>Chiltern</b>	none	none	none	none
<b>Milton Keynes</b>	<ul style="list-style-type: none"> <li>Orchard House, 67 and 69 High Street, Olney</li> </ul>	none	<ul style="list-style-type: none"> <li>Roman villa 300m south east of Newton Lodge Farm, Newton Blossomville</li> <li>St Martin's Church (site of), Emberton</li> <li>Roman site at Olney</li> <li>Wood Farm moat</li> <li>Group of ring ditches and enclosures at Tyringham</li> <li>Roman town of Magiovinium and Roman fort</li> </ul>	None reported
<b>South Bucks</b>	<ul style="list-style-type: none"> <li>Aviary at Dropmore House</li> </ul>	none	none	<ul style="list-style-type: none"> <li>Burnham</li> <li>Gerrards Cross Common</li> <li>Iver</li> <li>Stoke Green</li> <li>Taplow Riverside</li> <li>Uxbridge Lock</li> </ul>
<b>Wycombe</b>	<ul style="list-style-type: none"> <li>Church of St. Mary, Fawley</li> <li>Church of St. Francis, Terriers</li> </ul>	<ul style="list-style-type: none"> <li>Fawley Court</li> </ul>	<ul style="list-style-type: none"> <li>Bledlow Cross</li> <li>Two bowl barrows 450m north west of Slough Glebe Farm, Bledlow-cum-Saunderton</li> <li>Bell barrow 260m WNW of Slough Glebe Farm.</li> <li>Bowl barrow 140m WNW of Slough Glebe Farm.</li> <li>Roman villa east of Lodge Hill Farm, Bledlow-cum-Saunderton</li> <li>Motte and bailey castle, moated site and Roman villa, Little Kimble</li> <li>Roman villa north of Yewden Lodge, Hambleden</li> </ul>	None reported
<b>At risk Bucks</b> ( ) = change from 2009	<b>12 (0)</b>	<b>3 (0)</b>	<b>15 (-1)</b>	<b>6 (0)</b>
<b>Total Bucks</b>	<b>520</b>	<b>39</b>	<b>192</b>	<b>204</b>
<b>% Bucks</b>	<b>2.3%</b>	<b>7.7%</b>	<b>7.8%</b>	<b>2.9%</b>
<b>% South East</b>	<b>1.8%</b>	<b>6.5%</b>	<b>9.5%</b>	<b>4.3%</b>
<b>% England</b>	<b>3.0%</b>	<b>6.4%</b>	<b>16.9%</b>	<b>6.6%</b>



## LOCAL GOVERNMENT HISTORIC ENVIRONMENT SERVICES

To: Buckinghamshire Historic Environment Forum

Date: 8th November 2011

Authors: Report of the County Archaeologist

### A. PURPOSE OF THE REPORT

- 1 To draw attention to the 'third report on Local Authority Staff Resources' produced by English Heritage, the Association of Local Government Archaeological Officers and the Institute of Historic Building Conservation' (see appendix 1).

### B. PROPOSED ACTION

- 2 **The Forum is invited to:**

**REVIEW the implications with respect to historic environment services in Buckinghamshire.**

### C. RESOURCES

- 3 There are currently 2.6 FTE archaeologists employed by BCC plus a landscape archaeologist partly funded through an English Heritage contract. District Councils have varying levels of provision for historic buildings and conservation areas (AVDC 4 some p/t; Chiltern p/t post; South Bucks 1FTE; Wycombe ?).

### D. SUPPORTING INFORMATION

- 4 The report was circulated to Historic Environment Champions in August. It documents a loss of historic environment expertise in Local Authorities. The number of historic environment staff members working or local authorities fell by over 10% between early 2010 and early 2011; this decline is double the loss seen in the preceding year, 5.9% opposed to 11.9%; and both listed building consent applications and planning applications show uplift over the past year of 7.1% and 5.2%.

### E. BACKGROUND PAPERS

'A third report on Local Authority Staff Resources' produced by English Heritage, the Association of Local Government Archaeological Officers and the Institute of Historic Building Conservation'. (August, 2011)

**CONTACT OFFICER: ALEXANDER (SANDY) KIDD 01296-382927**





## A third report on Local Authority Staff Resources

Produced by English Heritage, the Association of Local Government Officers and the  
Institute of Historic Building Conservation

August 2011

### I Executive Summary

1.1 In early 2011 there were 957.5 full time equivalent (FTE) historic environment members of staff in local authorities in England. This comprised 606.5 FTEs working on building and area conservation and 351 FTEs archaeological staff. These figures represent a reduction of 5.6% since comprehensive data was first collected in 2003<sup>1</sup>; this breaks down into a reduction of 9.2% for Conservation Officers and a slight increase of 1.4% for Archaeological Officers. A high point in terms of numbers of historic environment staff was reached in 2006 when 1224 FTEs were working in local authorities, since then there has been a 21.8% reduction in numbers. In the past year there has been an overall reduction of 11.9%, with a reduction of 13.5% for conservation officers and 8.9% for archaeological officers (see figure 1).

1.2 It is concerning to note that whilst the planning application decisions show uplift in the past year of 5.2%, and listed building consent decisions show a slightly larger increase of 7.1%, the LA HE staff resource has reduced by 11.9% over the same period.

---

<sup>1</sup> As noted in the 2009 report, the figures for building conservation staffing contained in the Local Authority Conservation Provision Survey 2003 and in the later surveys were considered broadly equivalent for the purposes of providing a baseline, though while the earlier set will be robust in themselves, there is no way to confirm comparability between the statistics for 2003 and the 2006, 2008 and 2010 figures. See *Implementing the Heritage Protection Reforms: A Report on Local Authority and English Heritage Staff Resources*, EH/ALGAO/IHBC, May 2009. <http://www.helm.org.uk/upload/pdf/LPA-resources2.pdf?1311765498>

## 2 Introduction

2.1 This report has been produced following the publication of the Comprehensive Spending Round and the subsequent Local Government Settlement which were announced in October and December 2010 respectively. It compares the historic environment staff resources in local authorities in the early months of 2011 with those available since the data was first collected for Conservation Officers in 2003.

2.2 This report updates the position from last year's report on the change in staffing resources from the historic environment in local authorities; and includes an initial analysis of the available planning and listed building consent data for 2010-2011.

2.3 English Heritage staff resources working with local planning authorities on planning-related and grant-aid work have not been reassessed for this report as there has broadly been no change since the 2009 report.

2.4 This report has been produced jointly by English Heritage with the Association of Local Government Officers (ALGAO), which is the forum representing archaeologists working for local authorities and national parks, and the Institute of Historic Building Conservation (IHBC), which is the professional body for building conservation practitioners and historic environment experts many of whom are in local government.

2.5 The incoming coalition government cancelled the plans for another round of local government reform. However sharing of resources and expertise between authorities has been positively encouraged by the government and it is likely that this will continue for some time. This sharing of resources and expertise takes many differing forms ranging from 'merger' of whole authorities to combined services, such as planning and development management, covering number authorities.

2.6 The statistics include the often extensive design role of specialist conservation officers. However they do not include roles carried out by non-

conservation design practitioners where there is no appropriate oversight, even though their actions may have substantial, and often detrimental, impacts, especially on the non-designated historic environment<sup>2</sup>

### **3 Local authority staffing provision**

3.1 In early 2011 there were 957.5 full time equivalent (FTE) historic environment members of staff in local authorities in England. This comprised 606.5 FTEs working on building and area conservation and 351 archaeological staff.

3.2 These figures are for permanent, temporary and consultancy full time equivalents that provide historic environment expert advice within Local Authorities. The posts are those for which a related historic environment professional or academic qualification is required and for other staff, not fully qualified, who are engaged on equivalent work. Administrative staff is not included. Time spent directly managing staff is counted, as it has a direct consequence for the management of the historic environment. The management time of the head of a historic environment team is therefore included but that of the head of a group which includes the historic environment team is not.

3.3 The data was collected by ALGAO and IHBC. ALGAO has been keeping figures on local government archaeological staff resources on an annual basis since 1998; IHBC has also produced figures in 2006 and 2008, with broadly equivalent figures available from the Local Authority Conservation Provision Survey of 2003. Although there is more data for the archaeological resource, this report looks at the years for which both archaeological and building conservation data is available. These are 2003, 2006, 2008, 2009/10 and 2011.

3.4 The trend in employment in specialist historic environment services shows that there was an overall loss of nearly 129FTEs between the survey this year and

---

<sup>2</sup> For an indication of the cross-over between conservation and design activities see the see the IHBC paper 'Functions and titles of conservation and design services' ([http://www.ihbc.org.uk/recent\\_papers/docs/ihbc\\_survey\\_service\\_titles.pdf](http://www.ihbc.org.uk/recent_papers/docs/ihbc_survey_service_titles.pdf)).

last years survey. This is made up of a loss of nearly 95 conservation officer FTEs and just over 34 archaeological FTEs. This shows an increasing rate of loss over the previous years when the overall loss between 2008 and 2009/10 was 68FTEs, with a breakdown of 52FTE conservation officers and almost 16FTE archaeological officers.

3.5 These figures translate into an overall reduction of 11.9% between 2009/10 and 2011, with a reduction of 13.5% for conservation officers and 8.9% for archaeological officers. This represents a reduction of 5.6% since comprehensive data was first collected in 2003; this breaks down into a reduction of 9.2% for Conservation Officers and an increase of 1.4% for Archaeological Officers. These figures for the past year compare with an overall reduction between 2008 and 2009/10 of 5.9%, with a reduction for conservation officers of 6.9% for conservation officers and 4.0% for archaeological officers. The most recent data shows that the number of HE staff in LAs is falling at an increasing rate, with over 10% of the overall resource being lost during the past year

3.6 The longer term trend since data was first collected for conservation officers in 2003 shows that the conservation officers have reduced in numbers by 9.2% (61.5 FTE) whilst the archaeological officers have gone up very slightly by 1.4% (4.7 FTE) over the same period. Overall for both combined the loss has been 5.6% (56.8 FTE)

3.7 These longer term trends are shown in the graph below and indicate a peak was reached in 2006 with subsequent falls for both conservation and archaeological staff. For conservation officers the 2011 figure is 25.8% (210.5 FTE) lower than that recorded at their peak in 2006 and that archaeology officers suffered a fall of 13.8% (56.1 FTE) over the same period.

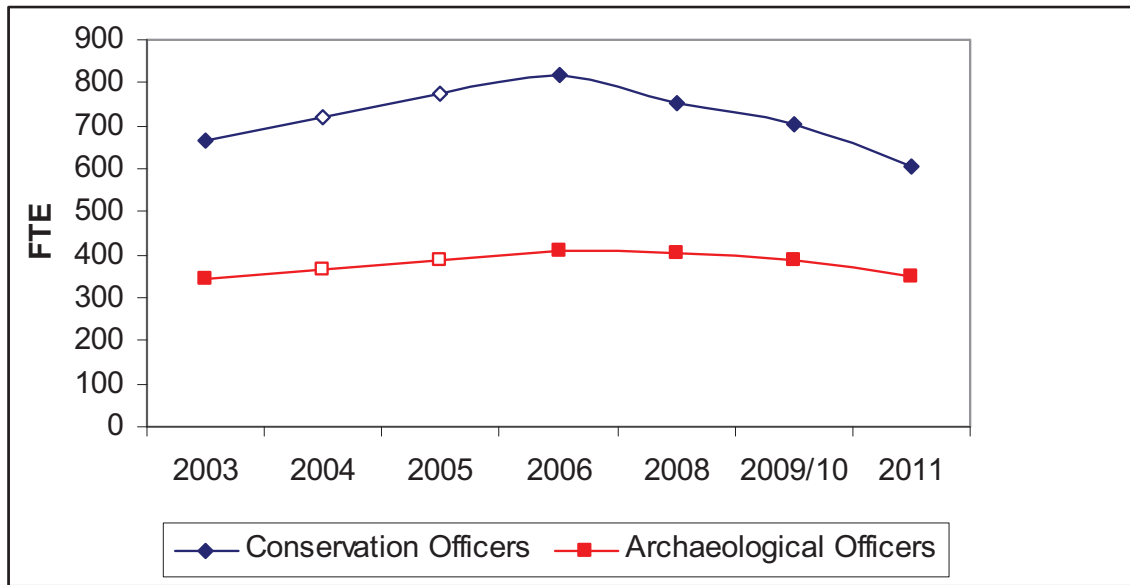


Fig 1 Conservation and archaeological staff expressed as FTEs

#### 4 Regional Breakdowns

4.1 The regional breakdown of the resource confirm the overall trend from the national picture with all regions recording a reduction in capacity for both archaeology and conservation, with the one exception of the archaeological provision in London which remained static from 2009/10.

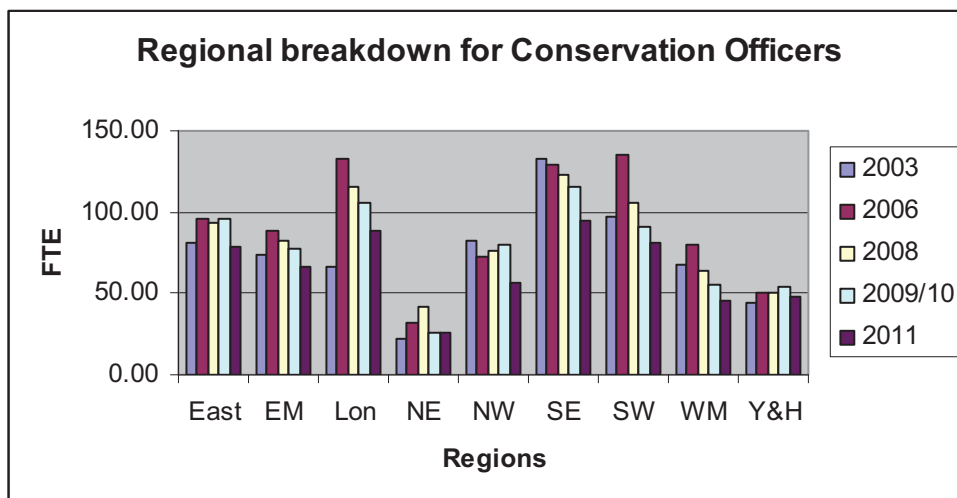


Fig 2 Regional breakdown for Conservation Officers expressed as FTEs

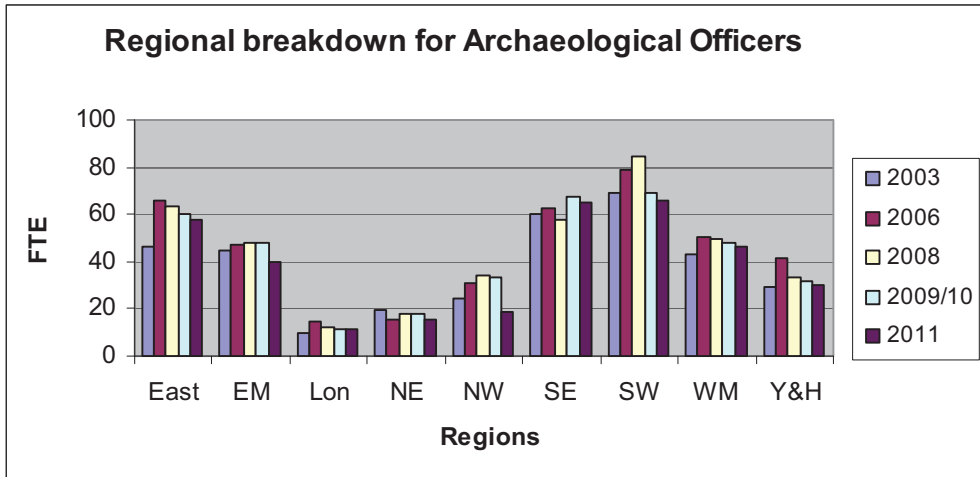


Fig 3 Regional breakdown for Archaeological Officers expressed as FTEs

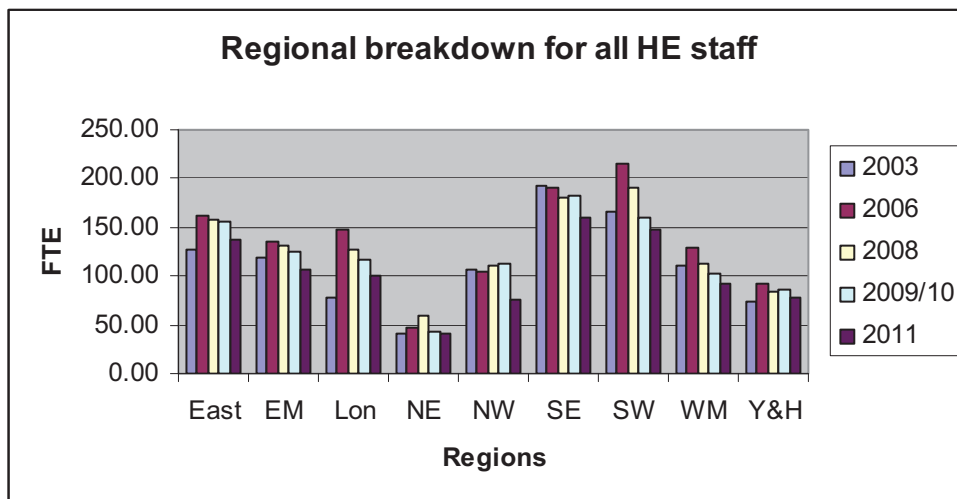


Fig 4 All local authority historic environment staff expressed as FTEs

4.2 These tables show that the North East had the lowest drop in overall numbers with a loss of 2.9FTE, this is probably a reflection of the low overall numbers of LA HE staff in the region. The North West region had the largest drop with a loss of 37.6FTE, which represents 29% of the total, with the conservation and archaeological officers both suffering significant losses. At present we have been unable to identify whether there were specific causes of such large losses in the North West for either the conservation or archaeological officers.

## 5 Planning Data 2010-11

5.1 The CLG planning data for 2010-11 has been recently released and shows that there has been an upturn of nearly 22,000 in the numbers of a planning application decisions compared to the previous year. In 2010-11 there are 439,905 planning application decisions compared to the previous year's figure of 418,000. This equates to an increase of 5.2% over the past year. When the data is broken down into regions the picture becomes considerably less homogenous. Most of the increase is accounted for in London, South East and East

5.2 The Listed Building Consent decisions also record a small increase of just under 2000 decisions, 29,168 in 2010-11 as opposed to 27,234 for the previous year, which equates to an increase of 7.1% over the past year. The graph below shows the high degree of consistency between the profiles for planning application decisions and listed building consent decisions. When the data is looked at regionally there is no pattern or consistency, for instance the North East records an increase whilst the North West doesn't.

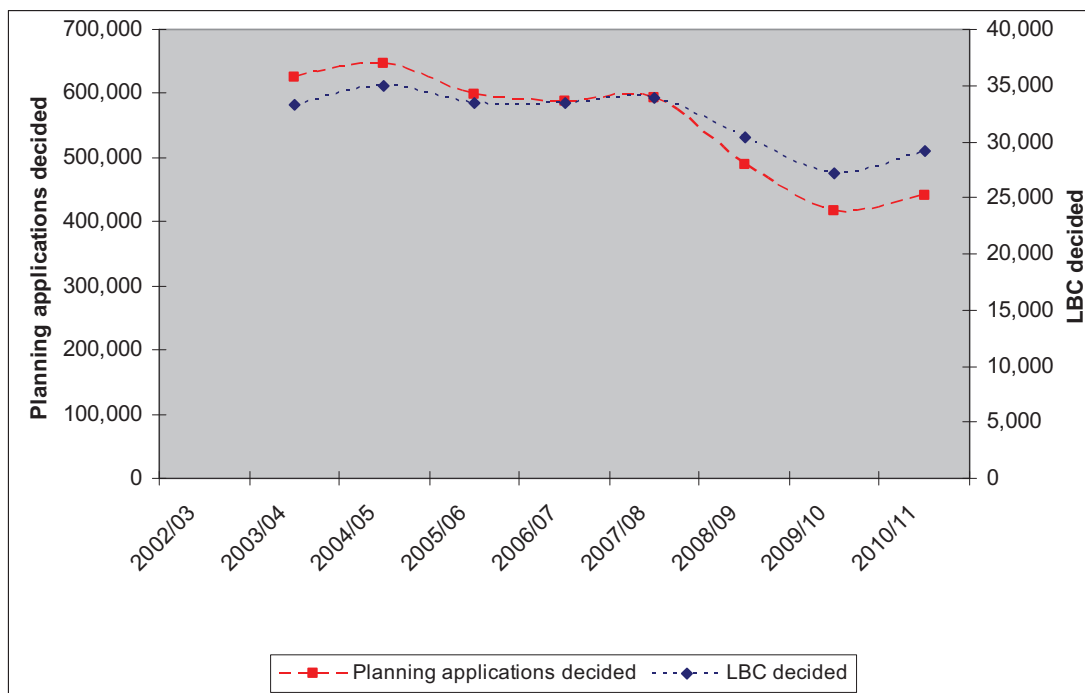


Fig 5 Plot of planning applications and LBC decisions showing the trend since 2003/4

5.3 These uplifts in numbers of decisions in the past year reverses the drop in numbers over the past three years. It is too early to say whether the longer term

drop from the peak in 2004-5 is going to be reversed for either planning applications or listed building consents. The figure above shows the degree of consistency between the graph for LBC and that for planning applications.

5.4 It is concerning to note that whilst the planning application decisions show uplift in the past year of 5.2%, and listed building consent decisions show a slightly larger increase of 7.1%, the LA HE staff resource has reduced by 11.9% over the same period. If these trends continue it is likely that the demand, as demonstrated by planning applications and listed building consent applications, will exceed the capacity of the local authorities to be able to respond with suitably qualified experts and therefore fulfil their obligations under PPS5.

5.5 Listed Building Consent decisions and planning application decisions are used as proxy indicators of the workload for conservation and archaeological staff because these are the only data that CLG collect and publish on an annual basis. It should be noted and remembered that both archaeological and conservation staff spend varying amounts of time doing work which is not reflected in the planning or LBC statistics e.g. agri-environmental stewardship.

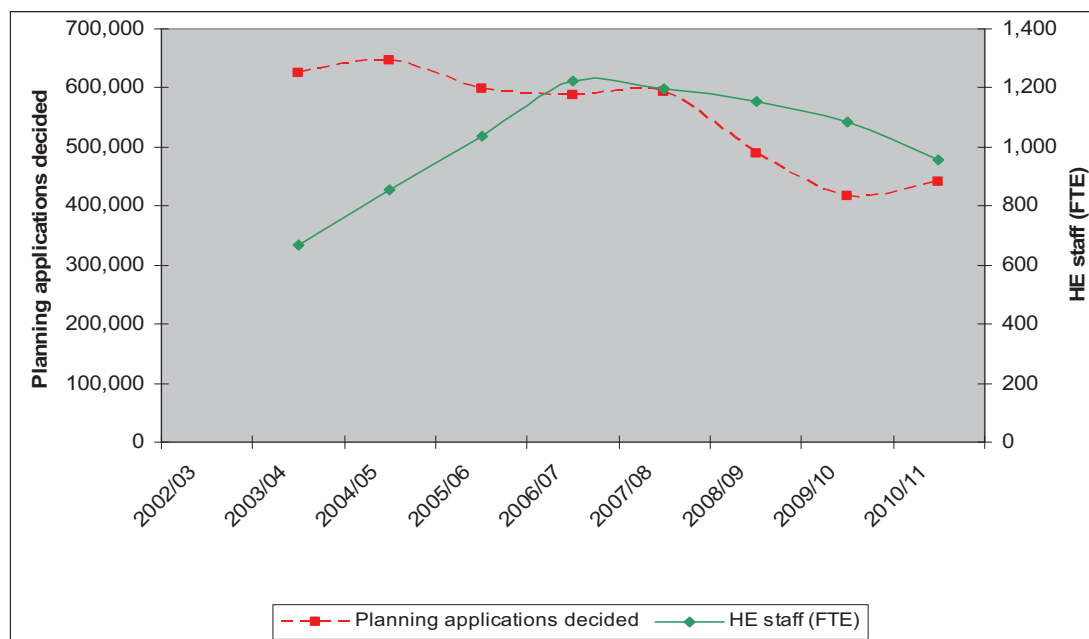


Fig 6 Plot of planning applications decided with the overall number of local authority historic environment staff



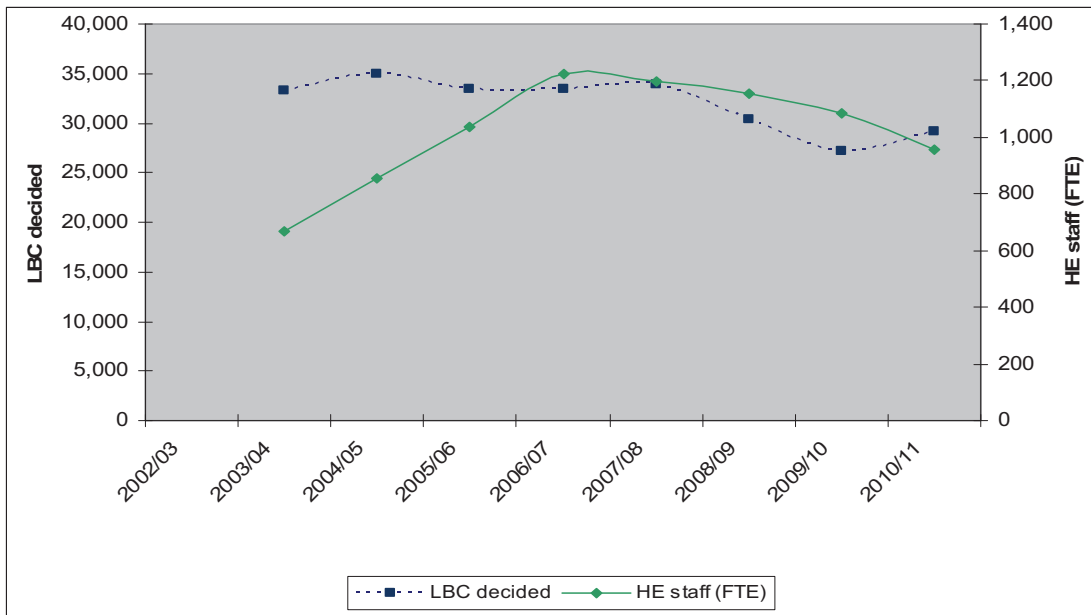


Fig 7 Plot of listed building consents decided with the overall number of local authority historic environment staff.

Dave Batchelor

August 2011



## **Buckinghamshire Archaeological Officer's Report**

To: Buckinghamshire Historic Environment Forum

Date: 8<sup>th</sup> November 2011

Author: County Archaeologist

### **A. PURPOSE OF THE REPORT**

- 1 To advise the Forum of the work of the County Archaeological Service since the last BHEF meeting.

### **B. PROPOSED ACTION**

#### **2 The Forum is particularly invited to NOTE:**

- a resources and performance indicators, including the new charging policy and changing managerial structure**
- b progress with strategic projects**
- c recent planning-related archaeological work**
- d progress in securing publication of archaeological reports.**

### **C. RESOURCES**

- 3 At present the service comprises three core staff (2.6 FTE). In addition David Green is externally funded post supported by English Heritage working on the Historic Towns Project and also internally project funded to manage the preparation of a Landscape Character Assessment for Chiltern, South Bucks and Wycombe Districts. Following the resignation of the Natural Environment Team Leader Sandy Kidd took on the role of Acting Team Leader Natural and Historic Environment and from April the merged team was joined by the Buckinghamshire & Milton Keynes Environmental Record Centre.
- 4 A consultation on a proposed merger of Planning, Environment & Development and Transport for Buckinghamshire is now underway. As noted in the attached consultation summary, financial constraints on the County Council are severe. It has therefore been necessary to increase income from fees and charges to recover a greater proportion

of the costs of the historic environment record and archaeological planning advisory service.

D. SUPPORTING INFORMATION

5 **Strategic Projects**

The **Buckinghamshire Historic Towns Project** is funded principally by English Heritage supported by Buckinghamshire County Council and Milton Keynes Council. Studies of Amersham, Aylesbury, Beaconsfield, Bletchley & Fenny Stratford, Buckingham, Burnham, Denham, Chalfont St.Peter, Chesham, Denham, Gerrards Cross, Great Missenden, Haddenham, Long Crendon, Newport Pagnell, Olney, Princes Risborough, Stony Stratford and Wendover are currently on the project web site. The Marlow and High Wycombe reports will be available shortly and the remainder by March 2012. Presentations of the results have been made to South Bucks and Chiltern District Councils and in Milton Keynes, further events are planned.

The **Solent-Thames Research Frameworks Project** is now progressing to publication of the regional resource assessments and research agenda.

6 **Planning related archaeological work**

<b>Volume measures</b>	<b>1st Quarter 2011</b>	<b>2nd Quarter 2011</b>
Total number of consultations handled	137	135
Number of planning applications handled	82	93
Planning applications responded to within 14 days (target 90%)	77%	90%
Number of development-related archaeological fieldwork projects	15	16
Success rate at appeal (target 50% annual success rate)	0 of 0	0 of 0

A full list of development-related fieldwork from January to June 2011 is provided as appendix A.

7 **Publication update (Appendix B)**

A revised post-excavation programme has been agreed with Oxford Archaeology for the joint publication of the **Dorney Rowing Lake and Maidenhead, Windsor and Eton Flood Alleviation Scheme**. The situation with other projects is summarised in appendix B.

E. BACKGROUND PAPERS

1. Archaeological Reports submitted to the Bucks HER
2. Place Service Review Summary

**CONTACT OFFICER: ALEXANDER (SANDY) KIDD 01296 382927**



## Appendix A: Development-related Archaeological Fieldwork in Buckinghamshire January to June 2011

Site	Project type	Contractor	Dates	Summary	Report to HER?	Proposed publication
<b>Akeley, Rose Cottage</b>	Watching brief	TVAS	May	Watching brief during extension groundworks did not reveal archaeological deposits but early post-medieval pottery was found, adding to the information gathered in the Whittlewood Project	Yes	Note
<b>Aston Clinton, Stablebridge Road</b>	Evaluation	OA	February	Evaluation in advance of development of greenfield site. Late Iron Age and Roman ditches and pits were found, indicating a settlement site within or very close to the site.	No, awaiting amended report	Note
<b>Aylesbury, Aylesbury High School, Walton</b>	Evaluation	AA	April	Small evaluation within footprint of new teaching block. One ditch was revealed, dating from the late Iron Age, probably an outlying settlement feature or field boundary	Yes	Note
<b>Aylesbury, Mill Street</b>	Evaluation	OA	March	Evaluation in advance of residential development revealed site has been contaminated and truncated by former garage. No evidence of the Roman road Akeman Street was found	Yes	Note
<b>Aylesbury, National Enterprise Academy site</b>	Evaluation	TVAS	March	Evaluation adjacent to the Bear Brook and Grand Union Canal revealed alluvial deposits and peat deposits dating from the late 17 <sup>th</sup> to 19 <sup>th</sup> centuries. Building foundations of late 19 <sup>th</sup> or 20 <sup>th</sup> century date were also discovered.	Yes	Note
<b>Biddlesden, Land at Henwood Farm</b>	Evaluation	Network Archaeology	March	Evaluation in advance of construction of new industrial units. Negative results despite discovery of Roman remains close by and proximity of Luffield Abbey	Yes	Note
<b>Burnham, 7 Church Walk</b>	Evaluation	TVAS	March	Small evaluation. Negative results despite potential for evidence of medieval settlement.	Yes	Note
<b>Coleshill, Littlelands, Barrack Hill</b>	Watching brief	AS	January	Negative watching brief despite the potential for medieval and post-medieval occupation and evidence of former farm buildings adjacent to the	Yes	None

Site	Project type	Contractor	Dates	Summary	Report to HER?	Proposed publication
				17 <sup>th</sup> century timber-framed house		
<b>Denham, Buckinghamshire Golf Club</b>	Evaluation	OA	March	Evaluation in advance of new office building. Trial trenching revealed part of a post-medieval pond shown on historic maps and associated pathway. Alluvial sediments contained significant quantities of preserved organic material in peaty lenses. Two auger samples were taken.	No, awaiting final report	Note
<b>Denham, William King Flour Mill</b>	Excavation	WA	March - June	Excavation of two large building basement footprints. Palaeo-environmental evidence gathered from peats and alluvium.	No	Post-excavation assessment report awaited
<b>Dinton, Moreton Barn, Ford</b>	Watching brief	JMHS	March	Watching brief on stripping for a new ménage on edge of scheduled ancient monument (DMV). An undated ditch was observed but the level of impact was above the archaeological remains, which were preserved in situ.	Yes	Note
<b>Ellesborough, The Chiltern Brewery, Nash Lee Road, Terrick</b>	Evaluation	JMHS	April	Small evaluation in advance of brewery extension. Two trenches revealed a buried soil layer containing 11 <sup>th</sup> -13 <sup>th</sup> century pottery and prehistoric flintwork	Yes	Note
<b>Haddenham, Land rear of 2 Fern Lane, Fort End</b>	Evaluation	JMHS	May	Evaluation of former farmyard within Haddenham historic core. Medieval ditches, dating from the 12 <sup>th</sup> and 13 <sup>th</sup> centuries, at least one medieval quarry pit and undated post-holes for a possible building were investigated	Yes	Note
<b>Haddenham, Rear of 25 High Street</b>	Evaluation	TVAS	May	Small evaluation to rear of High Street revealed evidence of medieval property boundaries and rubbish pits	?	Note
<b>Haddenham, Land at 5 Townsend</b>	Excavation	TVAS	June-July	Excavation in advance of residential development. Excavation confirmed findings of evaluation and revealed extensive evidence of medieval settlement including property boundaries, pits and post-holes dating from 11 <sup>th</sup> -14 <sup>th</sup> century	No	Post-excavation assessment awaited



Site	Project type	Contractor	Dates	Summary	Report to HER?	Proposed publication
<b>Haddenham, Townsend Garage</b>	Evaluation	TVAS	February	Small evaluation. Negative results despite potential for medieval settlement remains.	Yes	Note
<b>Ludgershall, Land at St Anthony's Barn, Tetchwick</b>	Strip and record excavation	TVAS	May	Stripping of new building footprint within Tetchwick village core, close to medieval moated site, revealed evidence of former disturbance on this site	Yes	Note
<b>Marlow, Marlow Sports Club</b>	Watching brief	JMHS	May	Intermittent watching brief during ground reduction for new multi-use games area. Watching brief confirmed the geophysical survey results; that this site lies just beyond the area of a known prehistoric funerary site	Yes	Note
<b>Marlow, 14-22 West Street/Riley Road</b>	Evaluation	AA	March	Small evaluation in advance of supermarket extension. Three post-medieval pits were found.	Yes	Note
<b>Mursley, Salden House</b>	Watching brief	ASC	March	Watching brief during construction of tennis court. Significant quantities of dumped brick and tile and large, limestone architectural fragments were recovered that may be linked to former 16 <sup>th</sup> century house	Yes	Note
<b>Nether Winchendon, Manor House Farm</b>	Watching brief	JMHS	June	Watching brief during groundworks for a new conservatory at this Grade II* manor house revealed evidence of a probable Tudor kitchen and other medieval and post-medieval deposits and finds, including a large piece of Late Gothic moulded sculpture	Yes	Note
<b>Princes Risborough, 1 High Street</b>	Historic building recording	ASC	May	Historic building recording of a Grade II 18 <sup>th</sup> – 19 <sup>th</sup> century building in Princes Risborough historic core, prior to its conversion.	Yes	Note
<b>Princes Risborough, St Mary's Church</b>	Watching brief	JMHS	February - June	Intermittent watching brief during removal of Victorian floor and insertion of drainage and new floor. Evidence of an early, pre-Anglo-Norman, phase was identified, along with subsequent phases throughout the medieval, post-medieval and Victorian periods. Several inhumations were	No, awaiting report	Note

Site	Project type	Contractor	Dates	Summary	Report to HER?	Proposed publication
				also recovered.		
<b>Stone, The Bugle Horn public house</b>	Historic Building Recording	Cotswold Archaeology	April	Historic building recording of 19 <sup>th</sup> century wall, which was once part of the Hartwell House estate. The wall was interesting because of its use of geological specimens, such as ammonites, as decorative elements. The wall was recorded prior to demolition.	Yes	Note
<b>Stoke Mandeville, Former BOCM site, Risborough Road</b>	Evaluation	ASC	May	Evaluation in advance of re-development revealed Roman ditches, pits, a cremation and several undated features. The Roman features may form part of a more extensive agricultural landscape relating to the Roman villa c. 600m away	Yes	Note
<b>Swanbourne, Land adjacent to 33 Mursley Road</b>	Evaluation	AS	May - June	Evaluation in advance of residential development on possible windmill site. Trenching revealed large 12 <sup>th</sup> -14 <sup>th</sup> century ditch and two pits, each containing one pottery vessel dating from the Bronze Age or Early Iron age	Yes	Note
<b>Waddesdon, Waddesdon Estate minibus route</b>	Evaluation	ASC	June	Evaluation along proposed minibus route revealed intercutting Roman ditches and post-medieval ditches	Yes	Note
<b>Stokenchurch, Wormsley Park</b>	Watching brief	JMHS	January - February	Watching brief during construction of a new auditorium. Excavations uncovered the remains of a probable building constructed of timber and brick on a chalk platform, a possible Tudor conduit, medieval ridge and furrow, an earlier ha ha bank of early 19 <sup>th</sup> century date and several undated features	Yes	Note
<b>Weedon, Chestnuts Farm</b>	Watching brief	ASC	March	Watching brief during construction of new tennis court close to shrunken medieval village earthwork remains. No deposits were encountered although medieval pottery was recovered from the topsoil	Yes	Note
<b>Winslow, Old</b>	Excavation	ASC	March	Trenches reveal medieval ditched boundaries in	Yes	Note

<b>Site</b>	<b>Project type</b>	<b>Contractor</b>	<b>Dates</b>	<b>Summary</b>	<b>Report to HER?</b>	<b>Proposed publication</b>
<b>Vicarage</b>				northwest corner of historic town.		
<b>Wotton Underwood, South Pavilion</b>	Watching brief	JMHS	January - April	Watching brief during groundworks and construction of new swimming pool. Evidence of medieval settlement, including pits and ditches, was found along with remains of the post-medieval landscaped garden	No	Note

Abbreviations: AA = Albion Archaeology; AS = Archaeological Solutions; ASC = Archaeological Services and Consultancy; CA = Chiltern Archaeology; CAT = Cotswold Archaeological Trust; FA = Foundations Archaeology; GSB = Geophysical Surveys of Bradford; JMHS = John Moore Heritage Services; NA = Northamptonshire Archaeology; OA = Oxford Archaeology; OA East = Oxford Archaeology East; TVAS = Thames Valley Archaeological Services



APPENDIX B: LIST OF MAJOR ARCHAEOLOGICAL EXCAVATION PROJECTS AT THE POST EXCAVATION STAGE  
(NOVEMBER 2011)

Site	Archaeological Contractor (Date fieldwork completed)	Local Planning Authority	Principal Archaeological Interest	Situation	Action required
Bierton, Church Farm	Tempus Reparatum (1996)	AVDC	Bronze Age and Saxon to Medieval settlement	Contractor bankrupt. Developer unwilling to take responsibility. Planning enforcement case referred to AVDC but no progress.	Archive held at County Museum but planning case not recoverable.
Bierton, 80 Aylesbury Road	Network Archaeology (2004)	AVDC	Medieval boundaries and prehistoric crouched inhumation	AVDC requested to initiate enforcement action (Mar 07)	Seeking to pursue enforcement action. NO ACTION.
Weedon, Weedon Hill MDA	Wessex Archaeology (2006)	AVDC	Roman malting and field system	Draft report commented upon March 2009. Further radiocarbon dating agreed August 2010	Report promised imminently (Oct 2011)
Dorney Rowing Lake & Maidenhead Windsor and Eton Flood Relief Scheme	Oxford Archaeology	Bucks CC	Multi-period sites	Revised publication programme agreed with Oxford Archaeology July 2010 for publication by September 2011. Publication drafts spring-summer 2011.	Review report

<b>Site</b>	<b>Archaeological Contractor (Date fieldwork completed)</b>	<b>Local Planning Authority</b>	<b>Principal Archaeological Interest</b>	<b>Situation</b>	<b>Action required</b>
Wexham- All Souls Farm	Thames Valley Archaeological Services (2008)	Bucks CC	Bronze Age and Roman settlement	Post-excavation assessment and draft report agreed. Draft report received (Oct 2011)	Review report
Chesham, Sainsbury's sites	Lindsey Archaeological Services (1998)	Chiltern DC	Medieval/Post-medieval urban tannery	Draft report submitted to Records of Bucks. LAS gone out of business. Discussed publication of summary March 2009.	Pursue completion with Naomi Field
Great Missenden, Bury Farm	Network Archaeology (2002)	Chiltern DC	Medieval moat and pottery production. Post-medieval barns.	Report received by HER and comments sent November 2009	Pursue agreed publication in Records of Bucks.
Denham, Former Sanderson Site	MoLAS (2005)	South Bucks DC	In-situ Early Mesolithic occupation site and environmental deposits	Post-excavation assessment & updated project design agreed but no progress and new developer querying Px requirement. Requested SBDC support on seeking compliance July 2009 and February 2011.	Pursue
Denham, The Lea Quarry	Cotswold Archaeology (2010)	Bucks CC	Bronze Age and Romano-British field systems and	Post excavation assessment due July 2011	Pursue

<b>Site</b>	<b>Archaeological Contractor (Date fieldwork completed)</b>	<b>Local Planning Authority</b>	<b>Principal Archaeological Interest</b>	<b>Situation</b>	<b>Action required</b>
			burials		
Taplow, Berry Hill Farm	Wessex Archaeology	Bucks CC	Early Iron Age and Roman boundaries	HER report submitted. Further mineral extraction consented.	Work to date only merits illustrated summary report but may be appropriate to combine with further investigation.
Hardwick-Marsh Gibbon Transco Pipeline	Network Archaeology and Cambridge Archaeology 2007	Statutory Undertaker	Iron Age and Roman settlements	Post-ex assessments from Cambridge and Network agreed.	Monitor to publication
Brill, 7-9 Temple Street	John Moore Heritage Services (2009)	AVDC	Medieval workshop and pottery production	Report submitted for publication in Recs of Bucks	None





## Place Service

As part of the County Council's Transformation programme, a new structure which will merge the Planning, Environment & Development (PED) and Transportation for Buckinghamshire (TfB) service areas is being proposed. The proposals seek to create a new service that is more flexible and responsive and therefore better able to meet the needs of the customers, react to and proactively identify member priorities and deliver more efficient and effective services. Communities and Locality Services are not included in this reorganisation.

PED and TfB are required to achieve significant efficiency savings. Work is already underway to challenge current approaches and identify savings to meet the Medium Term Plan financial plans between 2011/12 and 2013/14.

Further efficiency savings beyond those identified for individual services are needed to meet the overall budget challenge faced by the Council. In the Communities and Built Environment (CBE) portfolio the total is approximately £1.8m across the next three years, as part of the total £56m of Transformation savings for the Council. Some savings have been found but £1.5m remains the overall target for the CBE area.

The proposed merger will help deliver almost a third of the £1.5m, which remains the savings target for the CBE portfolio, as well as achieving the current Medium Term Plan saving targets across the Services.

As these proposals include potential redundancies a 90 day consultation for all staff working within these service areas started on 5<sup>th</sup> Sept 2011. The consultation will end on 5th Dec 2011.

At the end of the consultation process, we will consider any feedback received, and this will be reviewed against the changes proposed and incorporated where appropriate and practicable. This will be detailed in the end of consultation report.



**Buckinghamshire Historic Environment Record Officer's Report**

To: Buckinghamshire Historic Environment Forum

Date: 12<sup>th</sup> September 2011

Author: Historic Environment Record Officer

**A. PURPOSE OF THE REPORT**

1 To advise the Forum of the work of the Buckinghamshire HER since the last BHEF meeting.

**B. PROPOSED ACTION**

**2 The Forum is particularly invited to NOTE the HER performance indicators**

**C. RESOURCES**

3 At present the HER service comprises one core member of staff with occasional assistance provided by volunteers, students and business support staff.

4 As reported to previous meetings, financial constraints on the County Council continue to grow leading to pressure to increase income from fees and charges to recover a greater proportion of the costs of the historic environment record. A revised charging policy was approved by the Cabinet Member for Planning and Environment on 16<sup>th</sup> November 2010.

**D. SUPPORTING INFORMATION**

**5 HER Performance Indicators**

Service performance indicator statistics are collected for the County Council's performance management system.

<b>Performance Indicator</b>	<b>1<sup>st</sup> Quarter 2011</b>	<b>2<sup>nd</sup> Quarter 2011</b>
Historic Environment Records data inputting backlog (targets: reports < 30; collections < 1000 by March 2011)	Reports =55 Collect = 516 Total =571	Reports =60 Collect = 516 Total =576

<b>Volume measures</b>	<b>1<sup>st</sup> Quarter 2011</b>	<b>2<sup>nd</sup> Quarter 2011</b>
Number of Higher Level Stewardship	4	2

applications handled		
Number of reports received by the HER	49	38
Number of Historic Environment Records enquiries handled:		
commercial	12	16
non-commercial	5	1
UBP web-site users	NA	NA

Usage statistics for the UBP websites have not been available since the new version went live on the BCC web servers on 28<sup>th</sup> July 2010, due to technical restrictions required by BCC ITU. We are attempting to resolve this to enable website user statistics to be collected but have not been successful to date.

Use of the HER for non-commercial purposes continues to remain comparatively low, probably as a result of people using the online versions of the database. At the last meeting of the Forum I reported that following a fall in the number of commercial enquiries in the 3<sup>rd</sup> and 4<sup>th</sup> quarters of 2010, in the New Year the number of enquiries seemed to be picking up again; however the upward trend slumped from the end of April and has remained fairly low over the summer. User satisfaction with the service provided by the HER remains high, with 100% satisfaction with the HER and with the UBP website.

The HER Officer has been dealing with consultations for Higher Level Stewardship applications since June 2010 as a result of the Archaeological Planning and Conservation Officer working part-time. The number of stewardship application consultations has therefore been included in the volume measures above.

At the end of May the Archaeology Service moved offices from Annexe A to the 6<sup>th</sup> floor of the County Hall Tower Block, along with other teams from Planning and Environment. The relocation has brought us onto the same floor as our colleagues in Planning, Waste, Rights of Way, Natural Environment and Sustainability and has increased the visibility of the Archaeology Service, making joint working much easier. The move has meant that the HER no longer has dedicated search room facilities for visitors, however an arrangement has been made with the Centre for Buckinghamshire Studies to allow visitors to use space in their Education Room; whilst greater use of digitised resources has already had an impact on the way HER enquiries are dealt with.

## E. BACKGROUND PAPERS

1. Archaeological Reports submitted to the Bucks HER

**CONTACT OFFICER: JULIA WISE 01296 382072**

**EMERGENCY ARCHAEOLOGICAL RECORDING FUND**

To: Buckinghamshire Historic Environment Forum

Date: 8th November 2011

Authors: Report of the Treasurer

**A. PURPOSE OF THE REPORT**

1 To review the operation of the emergency recording fund.

**B. PROPOSED ACTION**

**2 The Forum is invited to:**

**CONSIDER whether to request contributions for 2012/13.**

**C. RESOURCES**

3 The current balance is £7250.

**D. SUPPORTING INFORMATION**

4. There have been no calls on the fund in the period March to October 2011.

**E. BACKGROUND PAPERS**

None

**CONTACT OFFICER: ALEXANDER (SANDY) KIDD 01296-382927**

